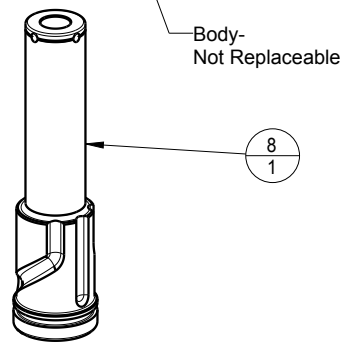
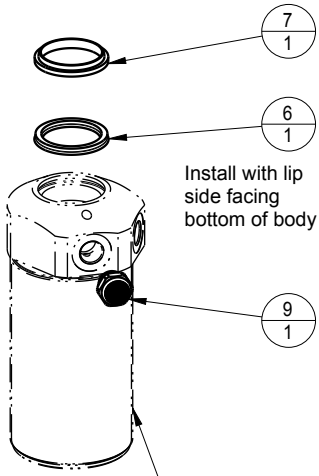
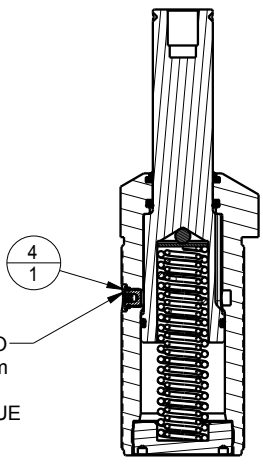
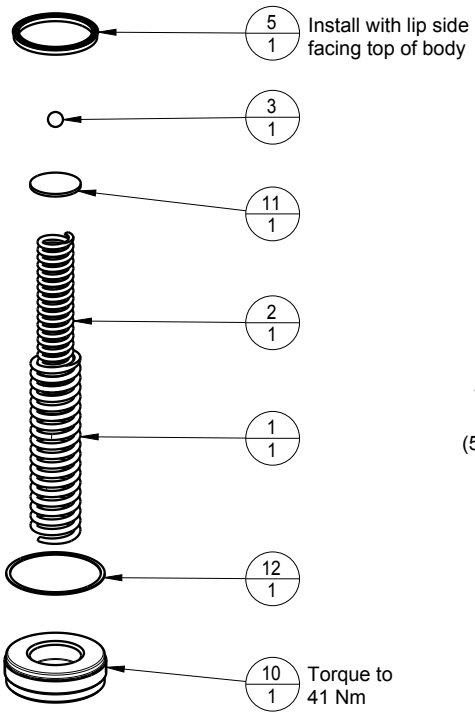



NO	QTY	PART NO	DESCRIPTION	STD SEAL KIT	FKM SEAL KIT	SPRING KIT
1	1	23314009	SPRING, COMPRESSION			X
2	1	23314010	SPRING, COMPRESSION			X
3	1	23600013	BALL STEEL, ALLOY, 312	X	X	X
4	1	30601130	ASSY, PLUG, SOCH, SAE 3			
5	1	39011055	SEAL, BEVEL, 1-9/16 x 3/32 x 1-3/4	X	39052013	
6	1	39011060	SEAL, BEVEL W/WHEEL INSERT, 1-1/4 x 1/8 x 1-1/2	X	39052015	
7	1	39053005	WIPER, SNAP-IN, (1-1/4)	X	39053005	
8	1	47511800	PLUNGER, SC, 22 KN			
9	1	49001905	BREATHER, 1/4 BSPP			
10	1	81531800	RETAINER, SC, 5000			
11	1	81591800	DISK, PIVOT, BALL, SC, 5000, SA			X
12	1	39T55004	GASKET, (-134)	X	X	X
N/A	N/A	46250103	KIT, SEAL, CYL, PP, TB, SA, 24.9KN	NOTED	N/A	N/A
N/A	N/A	6V250107	KIT, SEAL, CYL, PP, TB, SA, 24.9KN, FKM	N/A	NOTED	N/A
N/A	N/A	46100009	KIT, SPRING,	N/A	N/A	NOTED



Lubricate all seals with clean hydraulic fluid prior to assembly



<b>PARTS LIST</b>	 VEKTEK, INC. 1334 E. SIXTH AVE. P.O. BOX 625 EMPORIA, KS. 66801 U.S.A.	
	ASSEMBLIES AFFECTED	PARTS LIST, ASSY, CYL, PULL, TB, 24.9KN
REV	DATE	REV B
DATE: 5-8-17	DRAWING STATUS: <b>Released</b>	FORM FEG035_PL_ASIZE, REV. B

B	3449	RELEASE	JDW	04/07/18
REV	IN ACCORDANCE WITH ECN	EFFECTIVE DATE	REVISED BY	DATE
DRW BY: MAJ	DRAWING STATUS: <b>Released</b>			
DATE: 5-8-17	PRODUCTION APPROVED FOR RELEASED STATUS ONLY			